



# Visual Knitwears Ltd. Super Knitting & Dyeing Mills Ltd.

(100% export-oriented Knitting, Dyeing, Printing, Thread and Garments Factory)

## Factory Profile





# Visual Knitwears Ltd.

## Super Knitting & Dyeing Mills Ltd.

(100% export-oriented Knitting, Dyeing, Printing, Thread and Garments Factory)

### Company Information



We, 100% export oriented knit textile mills and readymade garments factories suited in Chittagong, Bangladesh. Our production unit vertically setup Knitting, Dyeing, Finishing, Printing (AOP), sewing Thread & Readymade Garments Industry. **We produce 70% of Knit and heavy knitwear Garments & 30% of woven garments.** We specialized on Polo shirts, T-shirts, Sweat Shirt, Fleece style, Zip Hooded Jacket, Basic Shirt, Jumpsuit, legging, blouse, Trousers, Boxer, panty etc. The factories are designed with fully modern machineries to meet the world market demand. We strictly maintain safety, health, hygienic systems and all other labor issues as per ILO & BGMEA. The mission of the company committed and skilled team of production and fully pledged commercial, marketing, merchandising, sourcing and office management.

To provide quality garments at a reasonable cost within definite time for the satisfaction for our customer through professional excellence by skilled management.

Visual Knitwears Ltd. has expanded its capacity, developed a skilled management team, workforce, Industrial Engineering and integrated sophisticated technologies in order to become globally competitive.

Our painstaking efforts to reengineer each steps of VKL's value chain—procurement, production process & planning, workforce productivity & efficiency, technologies—and turned them into core competencies have paid off.

Focusing solely in knitwear apparel lines, Visual Knitwears Ltd. has adopted a structure by reengineering its value chain to deliver high quality products in shorter lead time with flexibility in order size. Moreover, having endless efforts to ensure internationally accepted employment practice, our clients recognize us as a partner to protect their value system and images among final customers.









# Visual Knitwears Ltd.

(100% export-oriented Knitting, Dyeing, Printing, Thread and Garments Factory)

## Company at a Glance




	<b>Company Name</b>	:	<input checked="" type="checkbox"/> Visual Knitwears Ltd. (Garments &Knitting)
	<b>Sister Concern</b>	:	<input checked="" type="checkbox"/> Super Knitting & Dyeing MillsLtd. (Knit Textile & AOP) <input checked="" type="checkbox"/> Super Thread Ltd. (Sewing Thread & Yarn dye) <input checked="" type="checkbox"/> Focus International (Woven Garments) <input checked="" type="checkbox"/> Quader Trading Company(Recycle Felt Industry) <input checked="" type="checkbox"/> Super Synthetics Ltd. (DTY & FDI Polyester Yarn)
	<b>Type of Business:</b>	:	<b>Manufacturer and Exporter</b>
	<b>Legal Status</b>	:	<b>Private Limited Company</b>
	<b>Contact Person</b>	:	▶ Md. Fazlul Quader (Managing Director) ▶ A.N.Faisal (Director) Cell# +88-01711-439212
	<b>Head Office</b>	:	▶ 994/A, BTI Prince, Flat # A2, 2No Gate, Mosque Lane Chittagong-4000, Bangladesh.
	<b>Factory -1</b>	:	▶ Super Knitting Complex, Baizid Bostami Road, Nasirabad Industrial Area, Chittagong, Bangladesh.
	<b>Factory -2</b>	:	▶ 295, Hatazari Road, Chittagong, Bangladesh
	<b>Telephone</b>	:	▶ +880-31-2550741, 2580757, 2580758,681427,682740
	<b>Cell</b>	:	▶ +88 01711 439212 (whatsup/Viber)
	<b>Fax</b>	:	▶ +880-31-2580759, 681426
	<b>E-mail</b>	:	▶ info@vklbd.com, info@visualknit.com
	<b>Web</b>	:	▶ www.vklbd.com, www.visualknit.com
	<b>Trustable web</b>	:	▶ <a href="https://visualknit.trustpass.alibaba.com">https://visualknit.trustpass.alibaba.com</a>
	<b>Total Employee</b>	:	a) Workers : 750 Nos b) Textile & others: 700 Nos c) Office Staff: 120 Persons.
	<b>Total Sewing Machineries</b>	:	<b>APX 650 Sets.</b>



# Visual Knitwears Ltd.

## Super Knitting & Dyeing Mills Ltd.

(100% export-oriented Knitting, Dyeing, Printing, Thread and Garments Factory)




	<b>Production Basic Capacity Per Month</b>	:	<b>a) T- shirt : 7,000,00 Pcs</b> <b>b) Jogging/leggings : 5,000,00 Pcs</b> <b>c) Hoodie Jacket : 4,000,00 pcs</b> <b>d) Sweatshirt : 5,00,000pcs</b> <b>e) Zipper Hoodie : 4,00,000pcs</b> <b>f) Sleepwear : 7,00,000 set</b> <b>g) Swimwear : 5,00,000 pcs</b> <b>h) Babywear : 5,00,000 pcs</b> <b>i) Sportwear : 5,00,000 pcs</b> <b>j) Underwear : 10,000,00 pcs</b>
---	--	---	--



# Visual Knitwears Ltd.

## Super Knitting & Dyeing Mills Ltd.

(100% export-oriented Knitting, Dyeing, Printing, Thread and Garments Factory)






	<b>Exporting Country</b>	:	U.S.A. & European Countries Etc.
	<b>Our Bankers</b>	:	 <p>Shahjalal Islamic Bank Ltd.  Agrabd Branch,104, Agrabad Commercial Area ,Chittagong, Bangladesh.  A/C: 300111100006529  Tel: 88-031-813050, 728294 Fax: 88-031-616960  SWIFT: SJBLB DDH AGB</p>  <p>Foreign Exchange Corporate Branch,  CDA Annex Building, Chittagong, Bangladesh.  Tel: 88-031-630829 Fax: 88-031-632772  SWIFT: JANBBDDHCDA</p>
	<b>Payment Method</b>	:	LC Sight / T.T (50% advance & 50% Delivery Time)
	<b>Terms of Delivery</b>	:	FOB / C&F (Chittagong Port)
	<b>Product List:</b>		<p>All kind of Knit Garments like as T-shirt, Polo Shirt, Tank Top, Sweatshirt, Recycle Fleece Zip Hoodie, Fleece Jacket, Leggings, Blazer, Nightwear, Trouser, Jogging Suit, Baby Suit, Creeper, Romper, Baby Hat/socks, Functional fabrics Sportswear &amp; Workwear, Yoga Trouser, Bathrobe, Blanket, Apron etc.</p> <p><b><u>Undergarment:</u></b>  Boxer, Underwear, Brief, Panty, Bikini, Swimwear etc.</p>



# Visual Knitwears Ltd.

## Super Knitting & Dyeing Mills Ltd.

(100% export-oriented Knitting, Dyeing, Printing, Thread and Garments Factory)

		<p><b><u>Woven Garments:</u></b></p> <p>Woven Casual Trouser, Dress Pants, Casual Shirts, Ladies Blouse, Shorts Pant, Workwear protection Jacket, PPE Trouser, Basic Shirt, Flannel/woven Pajama, Swim shorts, Beach Wear, Trouser, Jacket, Apron, Jumpsuit etc.</p>
	<p><b>Code of Conduct for Visual Knitwear Ltd:</b></p> <p><b><u>BSCI:</u></b> DBID: 17839</p> <p><b><u>SEDEX:</u></b> Report Reference: SB-BD-07062014</p> <p><b><u>Wrap</u></b> Facilities Code# 10049</p> <p><b><u>Oko-Tex</u></b> Test No# 07.KA.56881</p>	   <p><b>12 PRINCIPLES</b></p> 



**GOTS Organic cotton**  
Certificates# 9889

**Accord**  
Factory ID: 9466

**Better work by ILO**

**Member of CBI**  
**Netherlands**

**Trusted Member of**  
**Alibaba.com**

**GRS**


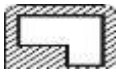





# Visual Knitwears Ltd.

## Super Knitting & Dyeing Mills Ltd.

(100% export-oriented Knitting, Dyeing, Printing, Thread and Garments Factory)

	<b>Year of Establishment</b>	:	2006
	<b>Total Area</b>	:	50,000 ft
	<b>Total Production Line</b>	:	<b>Production Running: 12</b>
	<b>Knitting Section- Lalirhatr Hat,Chittagong</b>	:	12 Set & 40 Set
?	<b>Dyeing Section</b>	:	20 Sets.
?	<b>Printing Section</b>	:	12 Tables 25,000 pcs/ Day

### SISTER CONCERN OF VISUALKNIT



**Member of:**

- Bangladesh Garments Manufacturers & Exporters Association Bangladesh (BGMEA)
- Knitwear Bangladesh Knit Manufacturers & Exporters Association (BKMEA)
- Bangladesh Textile Mills Association(BTMA)
- Chittagong Chamber and Commerce Industry(CCCI)





## Factory Information

### Textile Division

#### ❖ ❖ Knitting ❖ ❖

#### Knitting Machineries

- ⇒ Single jersey - Total - 35 sets (DIA 16"-36", Gauge-22, 24, 26)
- ⇒ Single Jersey- Total 5 sets( High Speed 28 Gauge & spandex)
- ⇒ Rib Machine - Total - 7 sets (DIA 18", 30",34" & 36" G-16/18)
- ⇒ Interlock Machine Total - 6 sets (DIA – 30, 34 & 36 Gauge-24/22)
- ⇒ Terry Fleece – Total 6 sets (DIA – 30", 18 /22Gauge)
- ⇒ Fleece – Total 2 set (DIA- 30", 16/18/22 Gauge)
- ⇒ Flat knit collar Total - 8 sets (4 sets computerized & 4 sets manual, Gauge-14)

**Total Circular knitting Machine: 52 set    Yarn Count: 20/s-50/s**



#### Knit Fabrics Product:

**Composition:** 100% cotton (cotton,BCI,Organic) 100% Polyester, Recycle Polyester, Functional Polyester & Recycle Yarn, CVC 60/40, TC 65/35, 80/20 CVC 100% cotton organic cotton, 50/50 cotton/modal, 95% cotton 5% spandex, Functional yarn by Top Cool, CoolMax, Invista, Lycra etc

**Yarn Version:** Conventional, BCI, Pima, Organic, Cotton Melange, Siro, Neppy, Blanded Recycled, Slub, Viscose Mélange, Mix Lurex, Inject, CIMA, Fair Trade, cotton/Modal, snow white, contamination free, space dye, Recycle Blended Yarn etc

#### Regular constructions Knitted Fabrics:

- |   |                                   |
|---|-----------------------------------|
| ⇒ Knitted single jersey                                   | ⇒ Rib (1x 1 / 2x2 / 3x3 / 4x4)    |
| ⇒ PK Polo (Single & Lacos)                                | ⇒ Fleece Brushed & unbrushed      |
| ⇒ Thermal   | ⇒ French Terry                    |
| ⇒ Collar-Cuff   | ⇒ Interlock (Plain & Drop needle) |
| ⇒ SUPIMA SJ   | ⇒ Spandex knit Fabrics            |
| ⇒ Yarn Dye Feeder & Auto Stripe Knitted (Single & Double) |                                   |



# Visual Knitwears Ltd.

## Super Knitting & Dyeing Mills Ltd.

(100% export-oriented Knitting, Dyeing, Printing, Thread and Garments Factory)

### **Specialized Constructions Knitted Fabrics:**

- ⇒ Baby Terry 95% Polyester (75/Dx72F) 5% Spandex 210g 28GG
- ⇒ CVC 80/20 Velour 220g-260g ⇒ 100% Polyester polar/Microfleece 180g-  
3) Both side brushed onside anti pilling /onside brushed)
- ⇒ Boucle Fleece (Top part Terry & back side Brushed) 250g
- ⇒ 50% Bambo 50% polyester Bambo Fleece 290g
- ⇒ 100% Polyester Coll Mesh 190g (T75/72+150/96)
- ⇒ 100% cotton Kotak Single Jersey 155g (30/c+150dx96F)
- ⇒ 100% cotton/Polyester Flouro cent Terry 220g
- ⇒ 50% Polyester 50% Top Cool /Cool Max Interlock 160g-260g
- ⇒ 100% polyester cool quick quick bee Single Jersey 140g
- ⇒ 100% cotton Lacos PK WATER RESISTANCE 220g
- ⇒ 100% viscose Single jersey 160g-220g
- ⇒ 50% polyester 50% topcool function polyester/wicking yarn
- ⇒ 50% cotton 50% modal Jersey ⇒ 90% polyester 10% space dye single jersey 240g

**Finishing/Washed:** Peach, Brushed, Silicon, Acid, Enzyme, Water Resistance, normal wash etc

**Dyeing & KNITTING CAPACITY 15,000 KGS/DAY**



# Visual Knitwears Ltd.

## Super Knitting & Dyeing Mills Ltd.

(100% export-oriented Knitting, Dyeing, Printing, Thread and Garments Factory)

### ❖ ❖ Dyeing & Finishing Machineries ❖ ❖



- ⇒ Winch Machine 3 set (capacity 1200kg,900kg,500kg) DENITECH by Italy
- ⇒ Winch machine 5 sets (Capacity 350kgsx2, 400 kgsx2, & 500 kgs)
- ⇒ Jet Dyeing Machine (HT) 2 sets (Capacity 50 kgs & 250 kgs)
- ⇒ High Temperature machine 9 sets  
(Capacity 150kgs, 200kgs, 250kgsx3, 350 kgsx2, 450 kgs & 600 kgs)
- ⇒ Sample Dyeing Machine 5 sets (Capacity 10 kgsx2, 20 kgs, 50 kgs & 80 kgs.)
- ⇒ Squeezer 1 set
- ⇒ Heat setting calendar 1 set
- ⇒ Tensionless Flat Dryer 1 set
- ⇒ Tube Dryer 2 sets
- ⇒ Compacting calendar (Monti, ITALY) 1 set
- ⇒ Compacting Calendar (Tube Tex, USA) 1 set
- ⇒ Soft setting calendar 2 set
- ⇒ Stentar 6 Chamber (Ehwah Suntext), Korea 1 set
- ⇒ Open width auto slitting, Bianco, Italy 1 set
- ⇒ Water Treatment Plant (30,000 liter)
- ⇒ Effluent Treatment Plant ETP [30,000 liter]

**Additional:**

- ⇒ **Spandex Fabrics Heat Setting 1 set**
- ⇒ **Open Width Auto Slitting Machine Bianco 1 se**



**Visual Knitwears Ltd.**  
**Super Knitting & Dyeing Mills Ltd.**  
(100% export-oriented Knitting, Dyeing, Printing, Thread and Garments Factory)

## ❖ ❖ AOP Printing Division ❖ ❖



**AOP: All Over Printing flat bed (8-12 colors) 3 set**

**(Model: KUIL 8400) (Capacity 5500 kgs per day)**

**Print: Pigment, Rubber, Discharge etc**

**Production Item:** Single Jersey(cotton/lycra), Rib (1x1 & drop needle), Pique/Lacoste, Collar/cuff , Interlock(plain & drop needle, flat back rib), Waffle/Thermal, Pointelle etc on 100% cotton, 100% polyester, 100% Viscose, Modal, Cotton/Rayon or Poly/Rayon(mixed), P/C & CVC any kind of knit & basic woven fabrics maximum width 72"



❖ ❖ **Lab Section** ❖ ❖

Description	Brand	QTY
Light Box	McBath	1 set
Lab Dyeing Machine	Fongs	1 set
Lab Dying Machine Shaking	ACE Instruments	1 set
Rapid Dyeing Machine	XIAMEN RAPID	1 set
Dryer	Winner	1 set
Washing Machine (General)	Singer	1 set
Tumble Dryer	Fisher & Paykel	1 set
Computerized Data Color machine	Spectra Vision USA	1 set



❖ ❖ **Sewing Thread Division** ❖ ❖

**Dyeing Machineries:**

- Sample dyeing on cone 3 sets (Capacity 5 kgs, 3 kgs & 5kgs)
- H.T Dyeing on cone 15 sets (Capacity 50 kgs to 280 kgs.)
- H.T Dyeing on Hanks 1 set (Capacity 10000 kgs)
- Button Dyeing 1 set
- Finishing (Re-cone): 35 set (150 Head/cones)
- Soft Winder: 15 set (223 Head/cone)
- Yarn Twister: 02 set (Capacity 180 kgs & 190 kgs.)
- Yarn Mixer: 01 set (Capacity 500 kgs)
- Dryer: 04 sets (Capacity 770 Bobbin/Cones)

**Product:** 100% polyester Sewing, Filament & Embroidery thread  
 100% cotton yarn dyeing

**Approved by:** Oeko-Tex Class I

**Thread Brand:** STL, Prime.





# Visual Knitwears Ltd.

## Super Knitting & Dyeing Mills Ltd.

(100% export-oriented Knitting, Dyeing, Printing, Thread and Garments Factory)



### LIST OF MACHINERIES

SL	Machine name	Brand	Origin	Specification	Model Name	Qty
1	SNLS	JUKI	Japan	single nedlle lock stitch machine with auto trimmer	DDL 8700	50
2	SNLS	JUKI	Japan	single nedlle lock stitch machine with auto trimmer	DDL 8700-7As	15
3	SNLS	Brother	China	Single needle Direct drive lock stich auto Trimmer machine	S-7100A	142
4	SNLS	Brother	China	Single needle Direct Drive lock stich auto Trimmer machine	S-7300A	10
5	SNLS	Brother	China	single nedlle lock stitch machine with Survo motor	DLM -S-777B-31-64	13
6	2NLS	JUKI	Japan	Two nedlle lock stitch machine with clutch motor	LH 3128SF	4
7	2NLS	Brother	China	Two needle Direct drive lock stich auto Trimmer machine	T-8722C/8752	20
8	2NCS	JUKI	Japan	Two nedlle Chain stitch machine with clutch motor	MH 380	4
9	2NOLS	Pegasus	Japan	Two nedlle Over Lock stitch machine with clutch motor	mo-852	48
10	2NOLS	Juki	Japan	Two nedlle Over Lock stitch machine with clutch motor	mo 6700s	20
11	2NOLS	Yamato	Japan	Auto 2 needle over lock machine	Z7125SD/Y5DF-8/K2	36
12	2NOLS	Pegasus	Japan	Two nedlle Over Lock stitch machine with clutch motor	m ax 5214	25
13	2NOLS	Pegasus	Japan	Direct drive Two nedlle Over Lock stitch machine auto	MX-5214-M03/333=2x4	24
14	2NOLS	Pegasus	Japan	Two nedlle Over Lock LFC stitch machine with clutch motor	mo-852	2
15	2NOLS	Juki	Japan	Two nedlle Over Lock LFC stitch machine with clutch motor	mo 6700 s	1
16	3N SAFS	Juki	Japan	3 nedlle Inter Lock Safty stitch machine with clutch motor	mo 6700 s	6
17	3N SAFS	Pegasus	Japan	3 nedlle Inter Lock Safty stitch machine with clutch motor	mo-852	2
18	3N FLS	Juki	Japan	3 nedlle Cylander bed Interlock Flat stitch with Back Side roller with clutch motor	Mh-7823/pl	1
19	3N FLS	Juki	Japan	3 nedlle flat bed Interlock stitch with Bainingd teap with clutch motor	Mf--7723-c10	6
20	3N FLS	Pegasus	Japan	3 nedlle flat bed Interlock Cover Stitch with clutch motor	1500W	16

21	3N FLS	Yamato	Japan	3 nedlle flat bed Elestice attach with right side fabrce cutter ,Interlock Stitch with auto Trimmer	VC2713GP	12
22	3N FLS	Pegasus	Japan	3 nedlle flat bed Elestice attach with right side fabrce cutter ,Interlock Stitch with clutch motor	1500W	3
23	3N FLS	Pegasus	Japan	3 nedlle Cylender bed Wast Elestice attach with right side fabrce cutter, with Ring Roller, with clutch motor	w-600/33b	4
24	3N FLS	Yamato	Japan	3 nedlle Cylender beb, Cuf Top cover stitch with auto thread Trimming	VE2731	8
25	3N FLS	Pegasus	Japan	3 nedlle Cylender beb, Cuf Top cover stitch with clutch motor	w--200-jb	3
26	3N FLS	Pegasus	Japan	3 nedlle Cylender beb, Cuf Top cover stitch machine auto	W264 HP-35nbx356/ft0c/ut327/pt	6
27	3N FLS	Pegasus	Japan	3 nedlle Cylender bed Wast Elestice Ring attach with right side fabrce cutter, with Ring Roller, with Auto Trimming and survo motor	w-600/33b	4
28	3N FLS	Pegasus	Japan	3 nedlle Cylender bed Buttom Haming Lift side fabrce cutter, with Clutch motor	w-600.33xe	2
29	3N FLS	Pegasus	Japan	3 nedlle Cylender bed Buttom Haming Lift side fabrce cutter, with Auto trimmer and survo motor	w-600.33xe	2
30	3N FLS	Pegasus	Japan	3 nedlle Flat bed Top cover Stitch with survo motor	w-500p	4
31	4N FLS	Pegasus	Japan	4 nedlle Flat bed Top cover Stitch with clutch motor	w-500/mbb	2
32	3N FLS	Pegasus	Japan	3 nedlle Cylender bed Top cover Stitch with clutch motor	W600	3
33	BHLS	Juki	Japan	Single nedlle Lock stitch Direct Drive Button holing Machine with Auto Trimming	LBH-1790s	4
34	BHLS	Juki	Japan	Single nedlle Lock stitch Button holing Machine with Clutch Motor	LBH -871	3
35	BTLS	Juki	Japan	Single nedlle Direct Drive Lock stitch Bartaking Machine With Auto Trimming	LK-1900AS	4
36	BTAS	Juki	Japan	Single nedlle Direct Drive Lock stitch Button Attach Machine With Auto Trimming	LK-1903AS	2
37	BHLS	Brother	Japan	Single nedlle Lock stitch Direct Drive Button holing Machine with Auto Trimming	800-B	4
38	BTLS	Brother	Japan	Single nedlle Direct Drive Lock stitch Bartaking Machine With Auto Trimming	403D	8
39	BTAS	Brother	Japan	Single nedlle Direct Drive Lock stitch Button Attach Machine With Auto Trimming	403D	2
40	POCIT ST	Juki	Japan	picotting zikzak machine with cultch motor	PX-320/4w	1
41	RIP CU	Pegasus	Japan	Rip/piping cutter machine with cultch motor	PL-922	2
42	RIP CU	Pegasus	Japan	Rip/piping cutter machine with auto	Lu-933	1
43	KANSA	KANSAI	Japan	Kansai waist belt Attach Chain stitch machine with clutch motor	Ksfd-140md	6
44	CUTT M	KM	Japan	Cloth Cutting machine	KM/KS	7
45	zakzak mc	Brother	Japan	One Step Zikzak Lock Stitch machine	L-8560A-431-018	1
46	Zlk Zak	Juki+ Brother	Japan	One Step Zikzak Lock Stitch machine	Lzz-90Ass	3
47	4N FEEDA	JU+PA	Japan	4 nedlle Cylender bed Top cover Inter lock Stitch with clutch motor	362004300	4

48	SANAPB	Max	China	sanap Button machine with clutch motor	Max	7
49	SANAPB	YKK	Japan	sanap Button machine with sami Auto	YKK	2
50	Fusing Machine	Daweoo	Japan	Auto Fusing machine	Max-450CS	2
51	Fabrice Inspection Machine	Winda	China	Auto Fabric Inspection machine	WD-124LF_ED	3
52	Auto fabric spreading machine	Winda	China	Auto Fabric spreading machine	WD-K-190	1
53	Auto pattern cutter machine	Winda	China	Auto Pattern cutter machine	WD-FJ1512	1
54	Neddle Detector Machine	Hashima	Japan	Neddle Detector Machine with LCD	HN-770G-100	1
55	Heat seal Machine	Max	China	Auto Heat seal machine	Max 38x38	2
56	Band Knife Machine	Max	China	Auto Band Knife machine	Max -700A	1
57	Auto Cad and Plotter	Llion	USA	Auto Cad and Plotter	WD -JET-205-(4HEAD)	2
58	Thread suking Machine	Max	China	Thread suking Machine	Max -560A	2
59	Iron Table	Velt	Italy	Auto iron Table	CL/500040	10
60	IRON Table	Max	China	IRON Table		10
61	Auto Spreader	Winda	China	Complete auto Spreader with table		2
62	Pull Test Machine	Ganstater	Japan	Button Pull Test Machine		1
<b>Total Machine Quantity =</b>						<b>597</b>





## Unit 2

### Machinery List

SL	Machineries	Quantity	Brand
1	Plain Machine	152 set	Daewoo/Toyota/Juki
2	Plain Machine D.L.M	2 set	Daewoo
3	Over Lock	63 set	Juki
4	Cylinder Bed	14 set	P/G
5	Interlock	10 set	Juki
6	Flat Lock	34 et	P/G
7	Button Attach Machine	6 set	Juki
8	Snap Button Machine	4 set	Local
9	Button Hole	5 set	Juki
10	Blind Stitching Machine	2 set	Juki
11	Pico Ting Machine	2 set	Kansai Special
12	Rib Cutter	2 set	Yamata/Idea
13	Two Niddle Plain Machine	10 set	Juki
14	Two Niddle Chain stitch	2 set	Yamata
15	Bar Tack Machine	4 set	Juki
16	Top Center/Kansai Special	3 set	Kansai Special
17	Pleating Machine	1 set	Local
18	Fusing Machine 1 sets	1 set	Model HBP HY-700D
20	Flat Lock Cylinder M/C 6 sets	6 set	Juki
21	Cutting Machine 5 set	5 set	KM / Blue Star
22	Vacuum Table With Steam Iron	15 set	Xeon



# Visual Knitwears Ltd.

## Super Knitting & Dyeing Mills Ltd.

(100% export-oriented Knitting, Dyeing, Printing, Thread and Garments Factory)

Social Compliance approved buyer



Business Social Compliance Initiative

# KappAhl





# Visual Knitwears Ltd.

## Super Knitting & Dyeing Mills Ltd.

(100% export-oriented Knitting, Dyeing, Printing, Thread and Garments Factory)

### List of Brand

SI No.	Buyer's Name	Country
1	KappAhl AB	Sweden
2	Macy's Inc	USA
3	Sun Project	Germany
4	Onepiece AS/Norway	Norway
5	Adler GMBH and OTTO GMBH	Germany
6	Lonsdale/England	UK
7	Tricorp Workwear/Holland	Holland
8	Dijon	USA
9	Jomo Fashion/ Eransting Family	Germany





**Social Responsibilities**

- A. Followed by ILO & BGMEA working Laws.
- B. Safe Working & Hygienic Conditions
- C. No bonded Labor
- D. Freedom of Association
- E. Safe Working Conditions
- F. No Child Labor
- G. Reasonable Working Hours
- H. Group Insurance for worker & employee.



**‘With Great Power Comes Great Responsibility’**



It's their right to be contributed & our duty to contribute and thus we are not doing any favor, instead paying debts with gratitude...





**Domestic Sourcing Partner**

- KDS Textile Mills Ltd./Chittagong
- Square Spinning Mills Ltd/ Dhaka
- GMS Knit composite Ltd./ Dhaka
- Coats Bangladesh/Chittagong
- YKK Zipper & Snap
- Hwell Textiles Mills Ltd.
- DBL Textile Mills Ltd.

- YKK/HHH Zipper/Chittagong
- Pahartali Textile Mills Ltd./Chittagong
- Shamim Spinning Mills Ltd/Dhaka
- KDS Accessories Ltd./ Dhaka
- HHH Zipper
- How are you Textile Mills Ltd.
- Mirco Fiber Textile Mills Ltd.

**International Sourcing Partner:**

- Victoria City China/HK
- Zhejiang Cathaya Int'l Co. Ltd
- Avery Denison HK
- Nilorn AB Sweden
- T-and-A HK
- RSWM Spinning, India
- King Fabrics Manufacturing, China

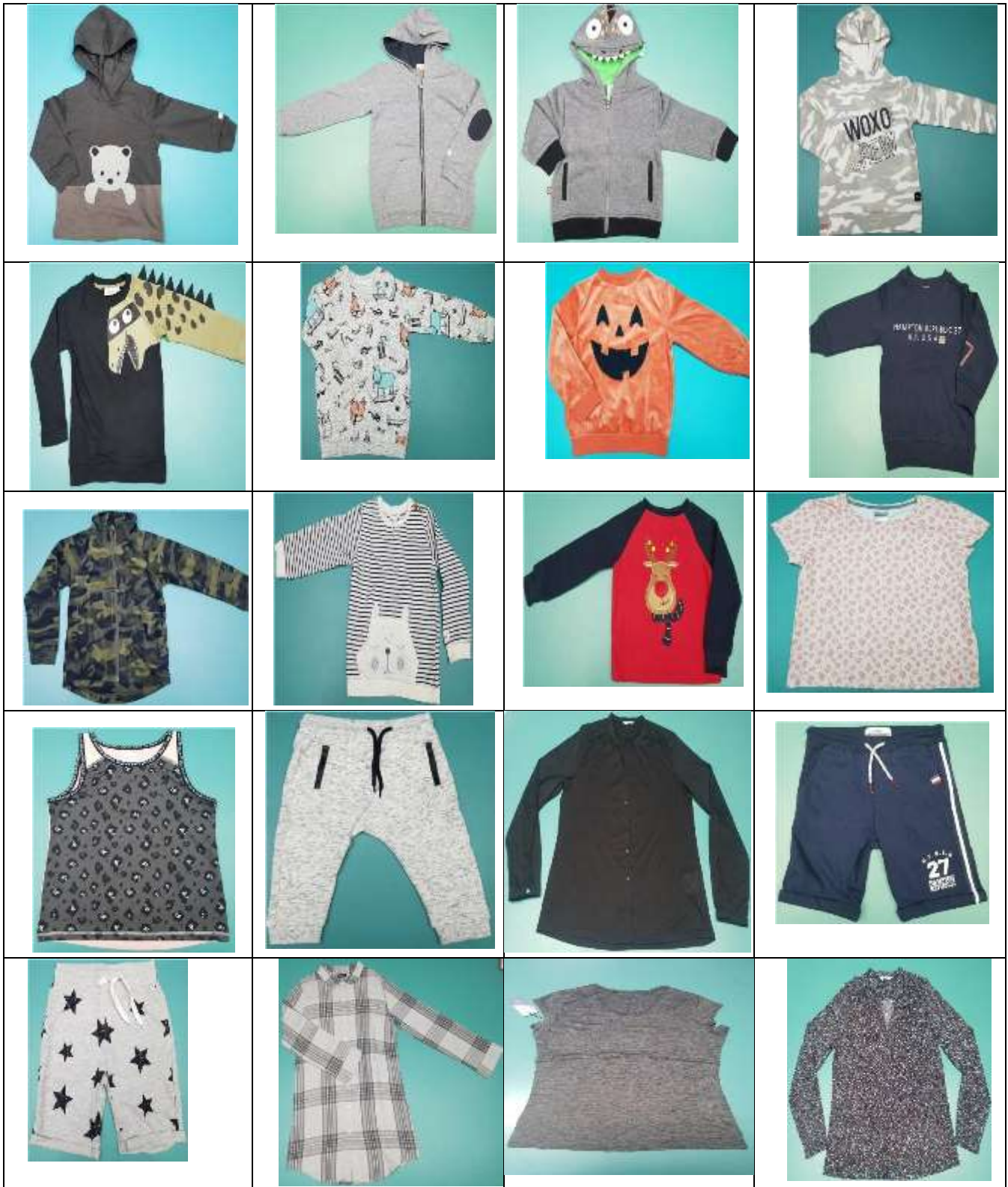
- Mainetti (HK) Ltd.
- Pantax HK Ltd.
- Paxar HK/Singapore
- Sainty Textile Mills Co; China
- Ningbo Textile Mills Co; China
- Nahar Spinning, India
- Uni Trading,China

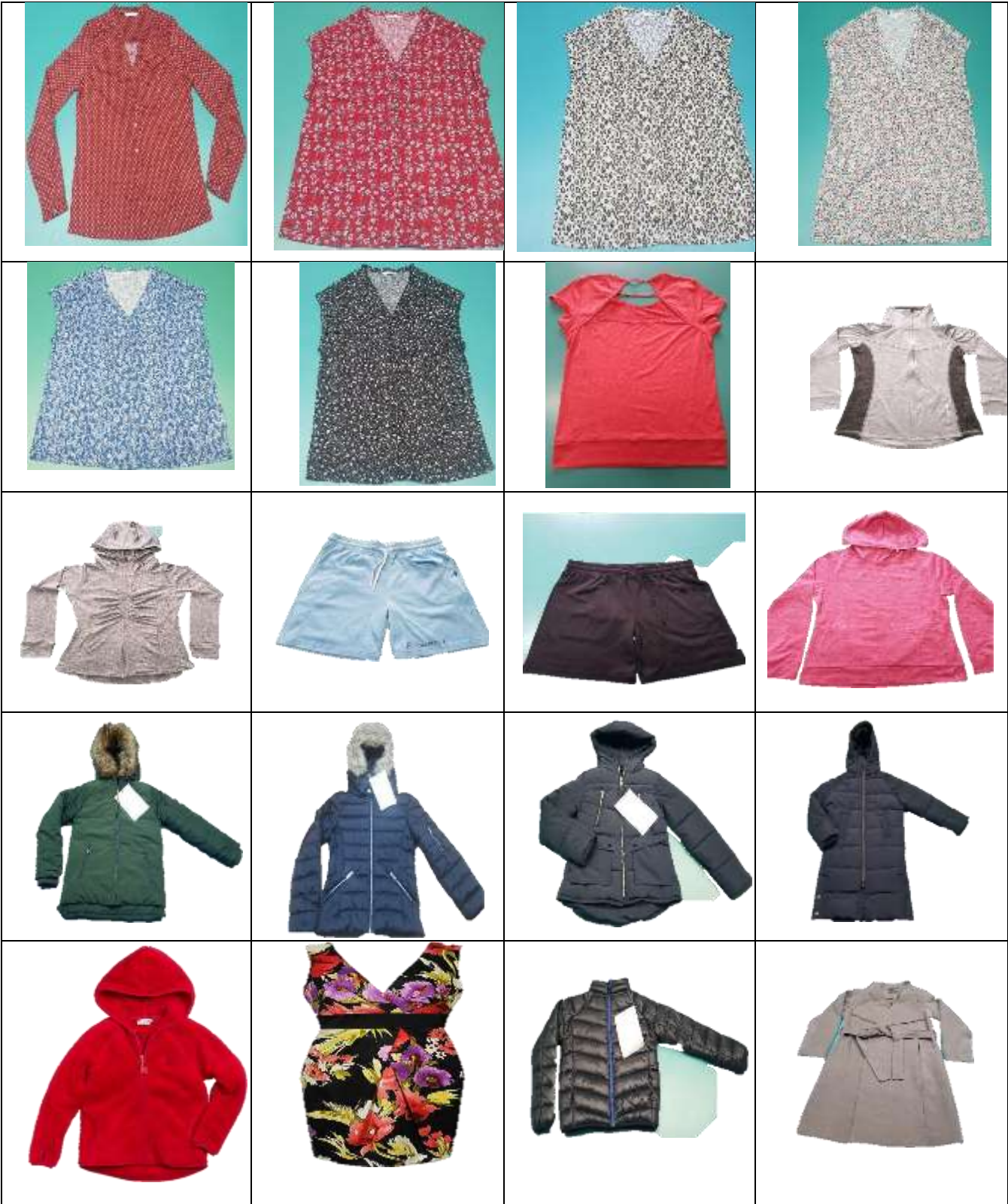




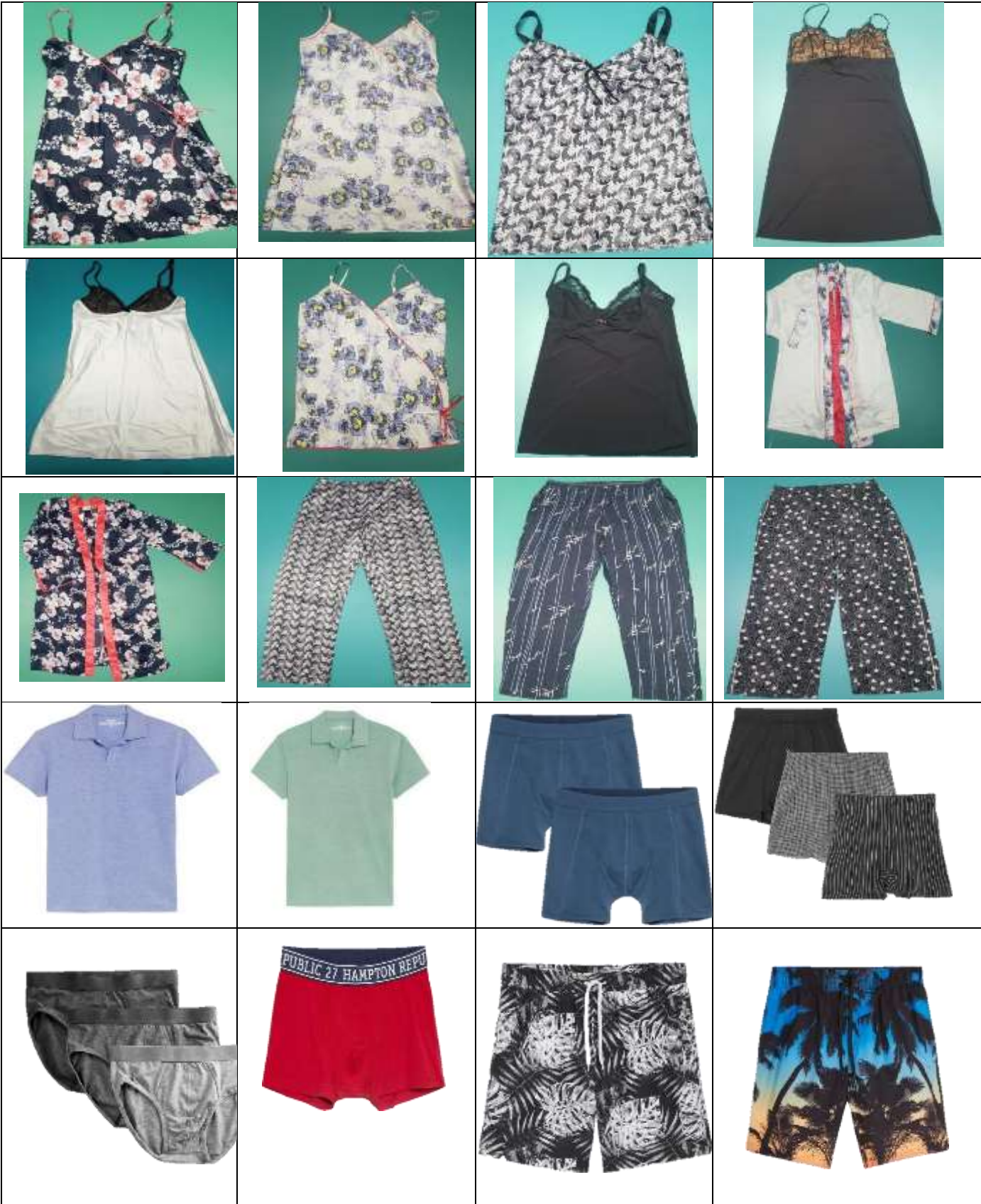
## Product Gallery

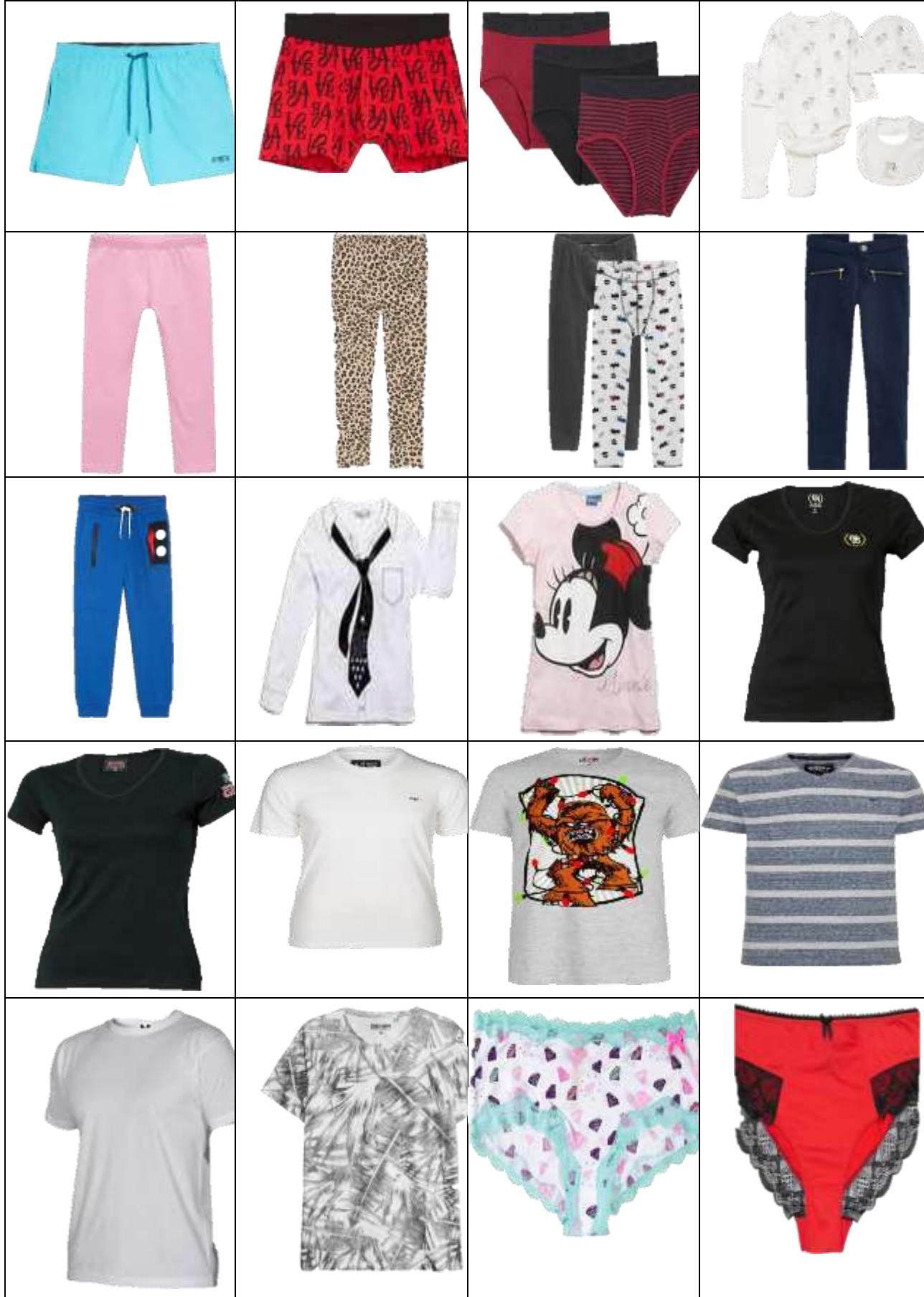














## PRODUCTION PROCESS

		
<b>Ware House</b>	<b>Knitting Section</b>	<b>Knitting Section</b>
		
<b>Admintration area</b>	<b>Sample Section</b>	<b>Dyeing &amp; Sewing Thread</b>
		
<b>Sewing Section</b>	<b>Cutting Section</b>	<b>Iron Section</b>
		
<b>Packing Section</b>	<b>CAD Department</b>	<b>All Over Point</b>



## Find us Google Maps

Google Maps Link to Us: <https://goo.gl/maps/visualknitwears>

Search us on  
Google as

Example Direction  
from 295,  
Hathazari Road,  
Chittagong,  
Bangladesh.

